



# 2025 Community Benefit Report

## From the CEO



Each year, we reflect on what it means to serve as our community’s hospital – a hospital that exists for the people of Onslow and surrounding counties. This year’s Community Benefit Report

These investments reflect our unwavering belief that good health begins long before someone walks through our doors. Our impact is also measured in lives touched – a company receiving Hands Only CPR training, a senior participating in a free stroke screening, a student gaining confidence through a residency program. These are the stories that define our mission.

shares how we’ve continued to honor our duty to be an anchor of health for this community by providing exceptional care, advancing health equity, and strengthening the well-being of those we serve.

None of this would be possible without the dedication of our physicians, nurses, teammates and volunteers, as well as the trust of our patients and community partners. Together we are building a stronger, healthier community for all.

Over the past year, Onslow Memorial Hospital has invested significantly to ensure the health and well-being of our patients and families, including free and discounted care for those in need, health education and outreach programs, and partnerships that address social drivers of health such as food insecurity, health education and awareness, and access.

With gratitude,

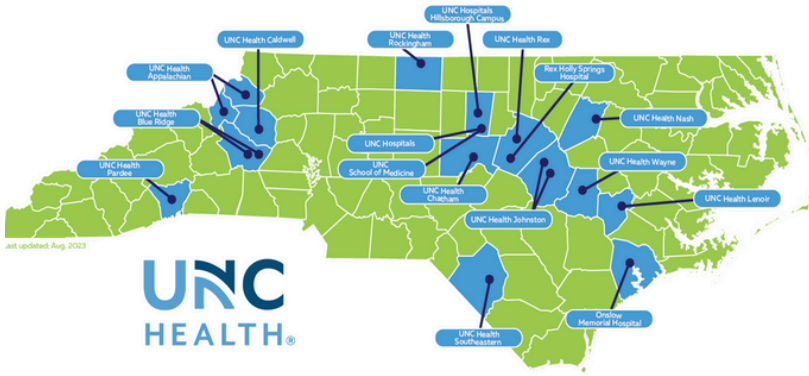
Penney Burlingame Deal, DHA, RN, FACHE  
President, Onslow Memorial Hospital

## FY 2025 By the Numbers

### Onslow Memorial Hospital Community Benefit Highlights Include:

Revenues Written Off to Uncompensated Care	\$34,585,750	Admissions	7,434
Grants and contributions	\$193,592	Average Daily Census	104
Salaries and Benefits	105,891,000	Emergency Department Visits	56,844
		Radiation Treatments	21,005
		Surgical Cases	3,789
		Deliveries	1,243
		Meals Served	304,053
		Clinic Visits	49,043

## UNC Health Map

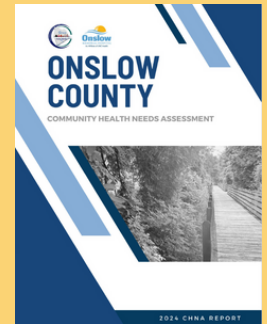


## UNC Health Values



## Community Health Needs Assessment

Every three years, Onslow Memorial Hospital (OMH) partners with the Onslow County Health Department (OCHD) to complete a Community Health Needs Assessment (CHNA). The community has focused on five priority areas: Data & Evaluation, Health Equity & Disparities, Mental and Behavioral Health, Healthy Living, and Physical Activity. In fiscal year 2025, OMH and OCHD completed the initial assessment and began developing the new CHNA. Onslow County identified Chronic Disease Prevention and Behavioral Health as the two priority areas for 2025–2027.



## One Great Team

At Onslow Memorial Hospital, we believe that collaboration strengthens our impact. Our dedicated team actively supports the health and well-being of our patients and the broader community through targeted outreach initiatives and comprehensive health screenings. These efforts are strategically aligned with the priority areas identified in our Community Health Needs Assessment, ensuring that we address the most pressing health challenges facing our community.

### Summer Latin Fiesta, Free Stroke Screening

The Onslow Hispanic Latino Association hosts an Annual Summer Fiesta that honors the Hispanic and Latino culture with traditional music, authentic cuisine, and family-friendly activities. The event attracts hundreds of attendees, and last year marked the first time Onslow Memorial Hospital participated as a sponsor and community partner, providing Stroke Screenings and educational materials in both English and Spanish for participants. OMH screened 58 people at this event.



Summer Latin Fiesta

### Hands-Only CPR, Bringing Lifesaving Skills to our Community

Hands-Only CPR is a proven, lifesaving technique that is as effective as conventional CPR for cardiac arrest in teens and adults when performed within the first few minutes. At Onslow Memorial Hospital, our dedicated team regularly delivers this vital training at community events and for small groups, empowering community members to act confidently in emergencies. In fiscal year 2025 alone, our teammates trained 656 people in Hands-Only CPR, and we are committed to continuing these educational efforts. To learn more or to schedule a training for your organization, please get in touch with Nancy Pate at [Nancy.Pate@onslow.org](mailto:Nancy.Pate@onslow.org).



Hands Only CPR

### Hope is Alive, Supporting Community Members Living in Recovery

Hope is Alive offers a network of sober living homes in Onslow and surrounding counties, including a nearby residence in Hubert, NC, that supports 12 women on their recovery journey. In the last fiscal year, teammates at Onslow Memorial Hospital extended meaningful support to these women by providing holiday gifts, fostering a sense of community and encouragement during a pivotal time in their lives. This partnership reflects our commitment to uplifting individuals in recovery and promoting hope, healing, and resilience within our community.



Hope is Alive

# Carolina Care From a Family You Can Trust

## Strategic Community Engagement

We recognize that meaningful change is achieved through collaboration. Our strategic community partnerships are vital to advancing health and wellness for everyone in our region. By working closely with local organizations, such as the Onslow Hispanic Latino Association, Jacksonville Police Department, and the Onslow County Health Department, we extend our healthcare reach beyond our hospital walls.

This past year, our partnerships have supported a range of initiatives, including free health screenings, educational workshops, food drives, and medication disposal programs. Through joint efforts, we've expanded access to care, addressed social determinants of health, and strengthened the safety net for our most vulnerable neighbors.

We are grateful for the dedication of our partners and look forward to building on these successes. Together, we are creating healthier, more resilient communities for all community members.



## Leading the Way

### Clinical Residency Programs

In April, Onslow Memorial Hospital announced an expanded partnership with Coastal Carolina Community College (Coastal). A scholarship program where OMH would offer full financial support to nursing students pursuing their Associate Nursing Degree. The scholarship is valued at nearly \$22,000 over the two-year program and also includes a \$500 stipend to cover additional expenses.

In addition to the scholarship program, OMH and Coastal have been longtime partners in expanding the clinical pipeline of future healthcare workers in Onslow County with programs such as the Registered Nursing Residency Program, Respiratory Care Assistant Program, and the Certified Nursing Assistant (CNA) Residency Program. This year, there were 22 students in the CNA 1 program and 5 in the CNA 2 program. The investment per student for the year of the program is \$212.



## It Starts With Me

### Onslow County, Priority Needs - Chronic Diseases *Expanding Access to Cancer Prevention & Care*

Chronic disease emerged as a significant concern for Onslow County, as we are facing higher prevalence rates for several conditions compared to the state and national benchmarks to include cancer. Specifically, cancer incidence in Onslow County (540.4 per 100,000 population) is significantly higher than both the state (464.4) and national (442.3) averages.

Onslow Memorial Hospital remains dedicated to providing our community with timely, high-quality cancer care close to home. Over the past year, OMH has expanded and enhanced services to better support the health and well-being of the community. This progress reflects one of our shared values. ***It Starts with Me.*** OMH teammates empower and trust one another to step up and hold themselves accountable to provide patients and their family members with the compassionate, advanced, and accessible care they deserve, right here in Onslow County.

#### Outreach and Screening

- Offered breast cancer screening and education during the 2024 Miles for Mammos 5k, increasing community awareness and access to early detection.
- Collected over 250 new and/or gently used bras during a bra drive to collect and distribute free bras to underserved communities, supporting individuals recovering from breast surgery and raising awareness about Julie's Pink Warrior Project.
- Conducted skin and prostate cancer screenings at the Hop into Health event, expanding preventive care and early intervention opportunities.

## Expanding Access to Cancer Prevention & Care (Continued)

- Conducted skin and prostate cancer screenings at the Hop into Health event, expanding preventive care and early intervention opportunities.
- Offered support group services led by the social work team for patients and family members receiving treatment.

### Julie's Pink Warrior Program

- 452 mammograms provided to community members through Julie's Pink Warrior Program.
- Raised \$17,590 at the 2024 Miles for Mammos 5K to directly support Julie's Pink Warrior Project.
- Raised \$366.36 by partnering with local restaurants and fast food chains such as Panda Express, Red Robin, and Chipotle, where a portion of the proceeds was donated to Julie's Pink Warrior Program.

### Dedicated Oncology Social Worker

- Added a specialized oncology social worker to guide patients and families through the emotional, financial, and logistical challenges of cancer care.

### Radiation Oncologist

- Expanded our radiation oncology team by hiring an additional physician, Dr. Bryce Lord, improving access and reducing wait times for patients requiring consultation and treatment.

### Breast Surgical Oncology Service Line

- Advanced the development of our dedicated breast surgical oncology program, broadening specialized care options and allowing patients to receive advanced treatment close to home.

## Forward Together 2030

Onslow Memorial Hospital is proud to be part of the UNC Health family, working Forward Together to strengthen healthcare across North Carolina. This partnership connects our community hospital with the expertise, resources, and innovation of a statewide health system while allowing us to maintain the personal, compassionate care our patients know and trust.

FORWARD TOGETHER 2030

Our new Health Star

An academic and community powerhouse with patients at the center of all we do

Patients First	Amplified Academics	Strengthened Core Operations	Reimagined Solutions
Working together to lead the way in quality, experience and affordability	Elevating our academic mission to drive world-class discovery, training, and complex clinical care	Transforming care and the caregiver experience to ensure it is smooth and efficient	Optimizing our services for today while preparing for the opportunities that will emerge in the future

## Onslow Memorial Hospital Foundation

In 2025, the Onslow Memorial Hospital Foundation experienced a year of historic growth and meaningful impact. The Foundation raised a record \$519,000, highlighted by a transformative \$401,000 gift from Onslow Caregivers Inc. to establish the Onslow Caregivers Endowment for Hospice Services. This milestone not only increased endowed funds to more than \$943,000 but also ensured sustainable support for hospice patients and families for generations to come.

The Foundation broadened its support across hospital departments, funding new projects in the Emergency Department, Women and Children's Services, and the Education Department, while continuing strong assistance for Oncology. Beyond the hospital, partnerships with community organizations strengthened services for the region. These included initiatives to address food insecurity with the Salvation Army, the creation of the Ed Garris Nursing Scholarship at Coastal Carolina Community College, and a collaborative effort with Veterans Services of the Carolinas and Blue Cross Blue Shield to provide an Adult Mental Health First Aid Workshop for hospital employees. In addition, the Foundation supported the Emergency Department in offering free Hands-Only CPR training to local businesses and civic groups, extending its reach into the community.

Leadership also grew significantly with the addition of eight new members to the Board of Advisors, now guided by Chair Lori Zeswitz of Swansboro and Vice Chair retired Brigadier General Kevin Stewart. The expanded Board reflects a diverse group of community advocates, business leaders, and OMH employees working together to strengthen the Foundation's mission.

With record-breaking fundraising, expanded departmental grants, transformative community partnerships, and strengthened leadership, 2025 stands as a landmark year for the Onslow Memorial Hospital Foundation. These achievements underscore its enduring commitment to caring, local, impactful, and efficient philanthropy that continues to shape the future of healthcare in Onslow County.



Thomas Giffin, Onslow Memorial Hospital Foundation Director